

MUNICIPAL

MR50

RESERVE

PLAN OF PROPOSED SUBDIVISION SHOWING SUBDIVISION OF ALL OF BLOCKS 70, PLAN No. 101844008 SE 1/4 Sec. 24 -61 -13 -W3rdMer. & BLOCKS 90, PLAN No. 101844008 NE 1/4 Sec. 13 -61 -13 -W3rdMer. GREEN LAKE, SASKATCHEWAN

LEGEND: PORTION TO BE SEVERED IS BOUNDED BY A HEAVY DASHED LINE AND CONTAINS 0.66 HECTARES MORE OR LESS. MEASUREMENTS ARE IN METRES AND DECIMALS OF A METRE. SCALE: 1:2,000 DEPARTMENT OF GOVERNMENT RELATIONS COMMUNITY PLANNING BRANCH:

PRELIMINARY PLAN COMPLETED ON MARCH 10th, A.D. 2008. BY: Mark J. Vande, S.L.S.

Prepared by: THE CITY SURVEYS LTD. P.O. BOX 548. NORTH BATTLEFORD, SASK. S8A 2T7. OUR FILE: W07429. DRAWN BY: T. PAPUGA. PH: 445-8148. FAX: 445-1545

OWNERS APPROVAL:

MAYOR-VILLAGE OF GREEN LAKE

ADMINISTRATOR-VILLAGE OF GREEN LAKE

L A K E

G R E E N

NW 1/4 Sec. 18 - 61 - 12 - 3

Rge. 13

Rge. 12

Road Allowance

REC'D PLAN No. BW2483

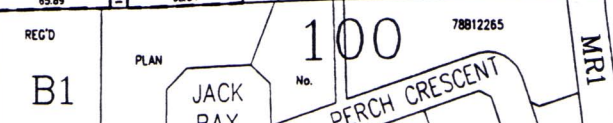
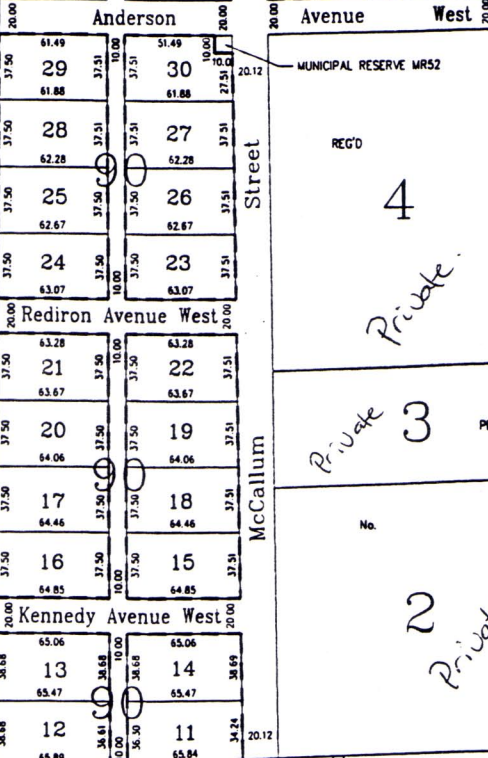
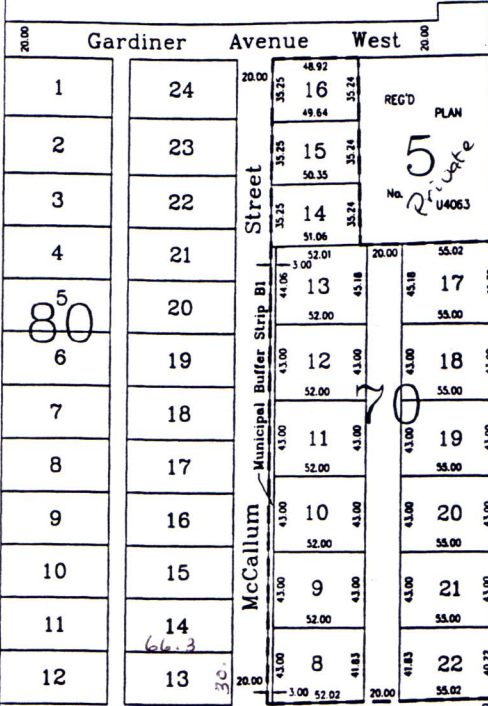
Surveyed Road

REC'D PLAN No. BW2483

30.48

A  
PLAN No. 101576819

B  
PLAN No. 101576819



S. 80Y SE 1/4 SEC. 24-61-13-3  
N. 80Y NE 1/4 SEC. 13-61-13-3

BANK

BANK

BANK

B1

JACK BAY

100  
No. 78812265  
PERCH CRESCENT

MR1

20.12